



New Starter's Information Booklet

Shawfield Lane

Rochdale

OL12 7RQ

Tel: 01706 641013

Community: 01706 657485

E-Mail: office@norden.rochdale.sch.uk

Website: www.norden.rochdale.sch.uk

A welcome from our Headteacher

Dear Parents/Carers,

At Norden, the children are at the heart of every decision we make. We work hard to ensure that every pupil develops academically, physically, socially and spiritually.

We are a large, thriving school with a Good Ofsted report. We have an experienced and caring team who do all they can to support the progress of every child who comes to our school.

Choosing the right school for your child is a very important decision; we believe we are the right choice because we ensure our children are safe, happy and are achieving their full potential.

This booklet provides you with an insight into our school but if you have any further questions or queries, please do not hesitate to contact me or a member of the team.

Mrs Rachael Bentham

Headteacher



Our vision:

Being the best we can be!

Our mission statement:

A school at the heart of the community

providing

Equal opportunities for all to grow and fulfil their academic and personal potential

through

A stimulating and enriched curriculum

within

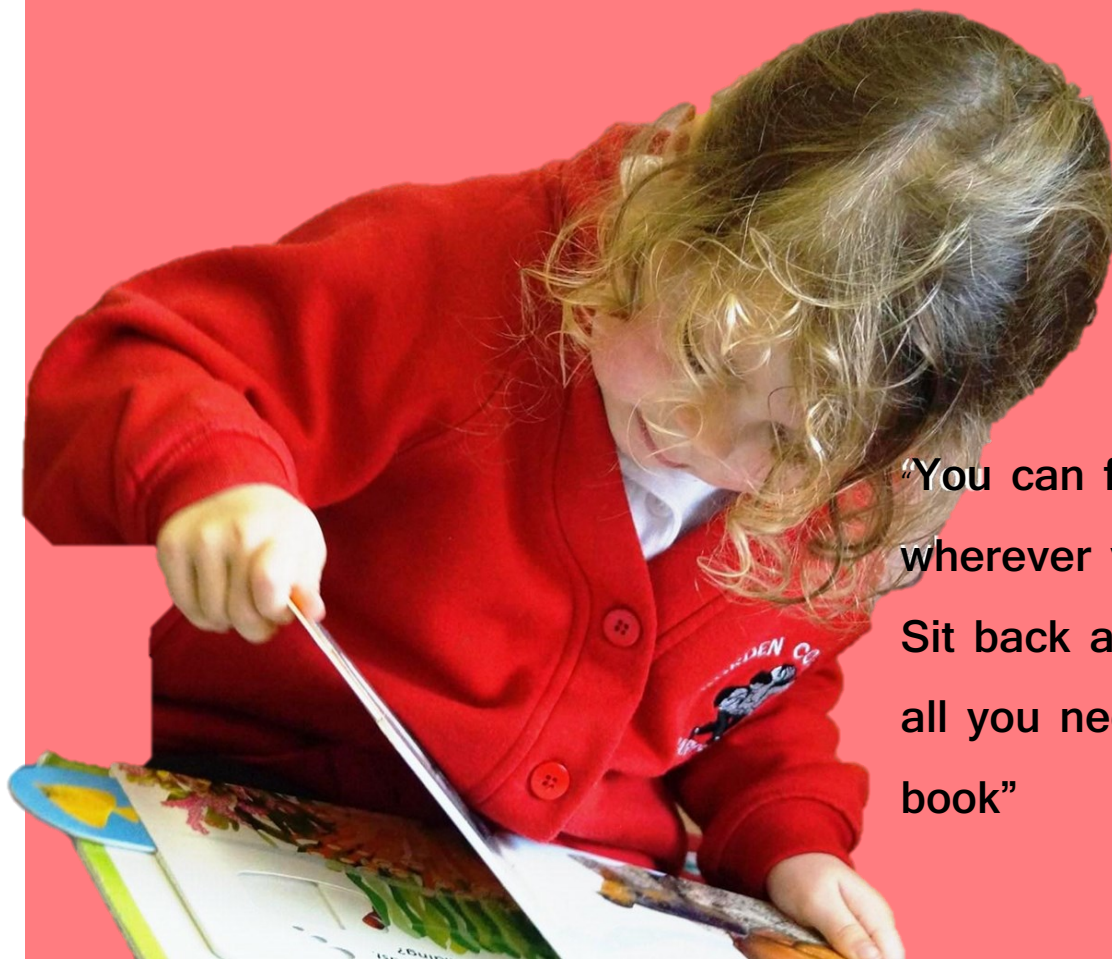
A safe, happy and supportive environment

resulting in

Responsible and respectful members of our society equipped with a thirst for learning and curious minds.

A parents' guide to:

Early Years



**“You can find magic
wherever you look.
Sit back and relax,
all you need is a
book”**

Norden Community Primary

Headteacher Mrs Rachael Bentham

Shawfield Lane, Norden, Rochdale, OL12 7RQ Tel: 01706 641013

Email: office@norden.rochdale.sch.uk Web: www.norden.rochdale.sch.uk

Welcome to our Foundation Stage Unit at Norden Community Primary School. The unit is made up of a Nursery and two Reception classes. They work closely together to provide the very best early start to your child's education. Our Foundation Stage Lead and staff work hard to ensure that the start of your child's school life is happy and successful. Therefore it is important that home and school work closely together to enable your child to fulfil their potential. We hope you find the information useful.

The Nursery is open from 8.30am—3.15pm to allow for the 15 hours flexible entitlement of children who are 3+. Lunch is provided from 11.30 - 12.15pm. Our Nursery teaching and learning sessions are 8.30—11.30am and 12.15-3.15pm.

There would usually be an evening meeting for parents and staff when information packs will be available for collection. However, this year we will be posting the information to you.

In the Summer term, you and your child would normally be invited to come along and visit the Nursery while it is in session so you can become familiar with the environment. However, this year we will be holding Zoom meetings.

The Reception class sessions take place from 8:30am to 3:00pm. The Reception door is opened at 8:30am and children should be collected at 3:00pm.

We have lunch between 11:30am and 12:30pm. All Reception children are entitled to a free school meal. More information is available in this starter pack.



A brief summary of the Foundation Stage Curriculum from September

Communication and language

This development involves giving children opportunities to experience a rich language environment; to develop their confidence and skills in expressing themselves; and to speak and listen in a range of situations.

Personal, social and emotional development

This involves helping children to develop a positive sense of themselves, and others; to form positive relationships and develop respect for others; to develop social skills and learn how to manage their feelings; to understand appropriate behaviour in groups; and to have confidence in their own abilities.

Expressive arts and design

This involves enabling children to explore and play with a wide range of media and materials, as well as providing opportunities and encouragement for sharing their thoughts, ideas and feelings through a variety of activities in art, music, movement, dance, role play, and design and technology.

Physical development

This involves providing opportunities for young children to be active and interactive; and to develop their co-ordination, control, and movement. Children must also be helped to understand the importance of physical activity, and to make healthy choices in relation to food.

Literacy

This development involves encouraging children to link sounds and letters and to begin to read and write. Children must be given access to a wide range of reading materials (books, poems, and other written materials) to ignite their interest.

Mathematics

This involves providing children with opportunities to develop and improve their skills in counting, understanding and using numbers, calculating simple addition and subtraction problems; and to describe shapes, spaces, and measures.

Understanding the world

This involves guiding children to make sense of their physical world and their community through opportunities to explore, observe and find out about people, places, technology and the environment.





Starting School

We understand that starting school is an important event for you and your child and we aim to make this transition as 'stress-free' as possible. We want to make starting school a special time by getting to know your child in a relaxed, caring environment.

Children's Visits

We like to get to know your child and help them to feel comfortable and confident about starting school in September. However, this term, we will arrange to meet your child via a zoom conference.

The School Day

School Morning Session:

Nursery	8.30 a.m. – 11.30 a.m.	
KS1	8.40 a.m. – 11.55 a.m.	(with 15 minutes break)
KS2	8.40 a.m. – 12.15 p.m.	(with 15 minutes break)

School Afternoon Session:

Nursery	12.15 p.m. – 3.15 p.m.	
KS1	12.55 p.m. – 3.00 p.m.	(with 10 minutes break)
KS2	1.05 p.m. – 3.00 p.m.	

Doors open at 8.30am at the start of the school day. We ask all Parents/Carers to ensure that their child is at school ready to start work at 8.40 a.m. We cannot accept liability for children in the playground before and after school. We have a privately run before and after school child care provider for parents wishing to use this facility. The school expects children to be collected at the end of the school day: **the person collecting the child must be over 16.** The end of the day is 3pm for children in years Reception to Year 6 and 3.15pm for children attending the afternoon session of Nursery. All children are brought to the door by their teacher or teaching assistant and handed over to their parent/carer. Parents/carers are expected to wait near their child's exit, within the school grounds. Children in Years 5 and 6 may walk home on their own if their parents/carers have provided written permission for this. If the person expected to collect the child is not there, the child will remain with the class teacher or teaching assistant. Any child not collected within 10 minutes will be taken to the school office and should be collected from the main entrance.

It is important that we know if somebody else will be collecting your child from school. Please let us know in the morning. If arrangements change during the day, please call the school office to make us aware.

School Meals

Children in Reception are entitled to the Universal Free School Meal. We would encourage children to try this as it is a positive experience for even the fussiest eaters. Staff will keep you informed if there are any issues with your child's eating.

We are a Healthy School and our school meals, including drinks, are well-balanced and low in sugar and salt. Our children are well supervised during the lunch break by our team of Lunchtime Organisers.

Snack

A healthy snack is provided for each child every day. Snacks vary each day and include various fruit and vegetables. We also encourage the children to keep hydrated by drinking water throughout the day. Children can bring a clearly labelled water bottle to school or they can be purchased from the school office for £1.50. In Key Stage 2, children can buy fruit from the fruit tuck shop at morning break. The cost is currently 20p per piece. Children from our School Council run the tuck shop.





Free School Milk

Children in Reception, Year 1 and Year 2 are entitled to free milk and this can be bought termly from Year 3 upwards at a cost of £10 per term.

Homework

We set homework tasks for the children from the Reception class upwards and ask Parents\Carers to support their child in the set tasks. This helps you understand what is taking place in school and gives a positive message about homework to your child. In Years 5 & 6, a homework diary is kept as the amount of homework increases and you will be expected to sign the diary to say that you child has completed their homework. We also run a homework club after school.

Attendance

If your child is ill, please contact the school on the first day of illness so that the reason for the absence is known. A record of all absences is kept and there needs to be a letter sent in when your child returns to school. Should parents fail to contact school, the absence will be recorded as unauthorised. You will also need to ensure that you fill in the contact sheet, each year, so that we can contact you, should your child become ill in school.

Parents should not take their children on holiday during term time. Fines may be issued by the Local Authority if children are taken out of school. Please be aware any absences are authorised at the discretion of the Headteacher.

Medicines

If your child requires medicines on a long or short-term basis while at school, please see the School office so that you can fill in a permission form for the administration of the medicine. Inhalers should be given to class teachers. These must be clearly labelled with the child's name.

Birthdays

As a Healthy school, we do not allow sweets and chocolate to be brought in to school when your child has a birthday. There is no expectation that Parents/Carers need to send anything into school but if they wish to acknowledge the occasion, then we recommend buying a book for the class library.

Lost Property

Please ensure all personal property has your child's name clearly marked on it. The children are not allowed to bring expensive toys. Mobile phones are only allowed in Year 5 and 6 with written permission by Parents/Carers. We do have lost property boxes in each unit and the PE changing rooms. If something is missing, enquiries should be made to the class teacher.

Parents' Evenings

At the beginning of every new school year we have 'Meet the teacher' evenings for parents. Teachers have the opportunity to introduce themselves and to explain what the children will be doing throughout the next academic year and how Parents/Carers can help their children at home. We have two parents' evenings each academic year, one for the setting of targets in the autumn term and one for discussing progress in the spring term. Interim reports are issued in the autumn and spring terms and an annual school report is issued in July.

Parents/Careers in School

We actively encourage you to be involved in school life. Each September we send a letter home asking parents and other relatives if they wish to help in school. Some of the activities include time spent in classrooms, listening to readers, school educational trips, helping with sports' teams, etc. We try to use as much of your expertise as possible and hope that you will always feel welcome in our school. We not only have relatives of the children helping in school but also retired teachers, retired craftsmen etc. We carry out police checks on all our volunteers, anyone working with our children needs a DBS check.

In preparation for your child starting school it would be useful if all children can ...

Take themselves to the toilet and wash their hands afterwards;

Recognise their names when written down;

Put on their shoes independently (Shoes with Velcro are advised);

Put on their coat independently

And finally...

The staff are available every day before and after school. Please do not hesitate to see us if you have any questions or concerns. If you wish to speak to a member of staff at any other time, please call the school office to make an appointment.

We hope that your child will enjoy their time at Norden Community Primary School and we will make every effort to ensure that this happens.

Important letter to Parents/Carers about attendance

Dear Parents/Carers,

School Attendance

Good attendance at school is important for learning. However, there will be times when absence is unavoidable and acceptable. This booklet explains the approach we are following to manage attendance.

Types of Absence

Each absence that a child has is classed as authorised or unauthorised. Absences are coded as authorised where reasons are considered valid and unauthorised where no explanation or unacceptable reasons are given.

Unacceptable Reasons

The following reasons are not acceptable:

- shopping visits
- care for family members
- days out to theme parks or to attend concerts/shows
- parents' work commitments or business trips
- holidays taken in term time (including long weekends taken on Fridays and/or Mondays)
- Parental illness

Unauthorised absences will be referred to, or identified by, the Rochdale Education Welfare Service.

Illness and First Day Call

If your child is unable to attend school through illness you should inform us by telephone (01706 641013) on the first day of absence before 9.00am or call in in person at the School Office. It is useful to know the expected day of return. If you do not supply us with this information we have a duty to contact you so that we may be sure of the child's whereabouts as this is a safeguarding measure. Where the child is absent through illness or medical appointments this will normally be recorded as authorised. Where we have concerns over excessive absence patterns through illness we will need to discuss this with parents in order to gain a better understanding of the problems and to offer support – for example by involving the School Health Service.

Medical/Dental Appointments

It is generally better if these can be arranged outside school hours but we know this is not always possible. Where children need to attend such appointments during the school day, Parents/Carers should go to the School Office to collect their child. Please bring your child to the office on returning from the appointment. Please indicate in advance whether s/he will be returning for the midday meal. Medical and dental appointments are recorded as authorised absences.

School Uniform

Boys	Girls
Grey Trousers/ Shorts White Polo Shirt Red Sweatshirt Fleece (For outdoors -optional) Grey or Black Socks Black sensible school shoes (no trainers)	Grey Skirt, Pinafore Dress, or Trousers\Shorts White Polo Shirt Red Sweatshirt or Cardigan Fleece (For outdoors -optional) Red checked dresses in summer (optional) White Socks Black sensible school shoes (no trainers)

Boys	Girls
Indoor: Black Shorts White T Shirt Black Pumps Outdoor: (Year 3 to Year 6) Navy or Black Tracksuit Trainers	Indoor: Black Shorts White T Shirt Black Pumps Outdoor: (Year 3 to Year 6) Navy or Black Tracksuit Trainers

Wellingtons and waterproofs are also needed for outdoor activities, in the Foundation Stage.




P.E kit is not required for Nursery children.

Sweatshirts, cardigans, polo shirts and fleeces with the school logo are available from Monkhouse School Uniform shop on Drake Street, Rochdale OL16 1RX. Please note fleeces must not be worn in school.

NORDEN

Community Primary School

SCHOOL YEAR CALENDAR – 2020/2021

TERM	START DATE	END DATE	NUMBER OF DAYS ATTENDANCE
Autumn 1st Half Term 	Thursday 3 rd September 2020	Thursday 22 nd October 2020	70 Pupil Days
<u>Half Term Break</u> Friday 23 rd October -- Friday 30 th October 2020			
Autumn 2nd Half Term	Monday 2 nd November 2020	Thursday 17 th December 2020	
CHRISTMAS HOLIDAYS – Friday 18 th December 2020 -- Friday 1 st January 2021			
Spring 1st Half Term 	Monday 4 th January 2021	Friday 12 th February 2021	59 Pupil Days
<u>Half Term Break</u> Monday 15 th February -- Friday 19 th February 2021			
Spring 2nd Half Term	Monday 22 nd February 2021	Thursday 1 st April 2021	
EASTER HOLIDAYS – Friday 2 nd April -- Friday 16 th April 2021			
Summer 1st Half Term 	Monday 19 th April 2021	Friday 28 th May 2021	61 Pupil Days
Early May Bank Holiday is on Monday 3 rd May 2021			
<u>Half Term Break</u> Monday 31 st May -- Monday 7 th June 2021			
Summer 2nd Half Term	Tuesday 8 th June 2021	Wednesday 21 st July 2021	
Inset Days for Teaching Staff – Tuesday 1 st September 2020, Wednesday 2 nd September 2020 Friday 23 rd October 2020 Friday 18 th December 2020 Monday 7 th June 2021			Total Pupil Days: 190

*“A school
in the heart
of the community”*

Headteacher: Mrs R Bentham



Shawfield Lane, Norden, Rochdale, OL12 7RQ
Tel: 01706 641013 Email: office@norden.rochdale.sch.uk
Community Tel: 01706 657485 Email: aparker@norden.rochdale.sch.uk



Eco-Schools



Quality Standard



Green School



Sample Menu

Week 1	Homemade Cheese Pasty ~ Fish Fingers & Buttered Bread ~ Duchess Potatoes Mushy Peas ~ Ice Cream Cone	Club Burger ~ Vegetable Biryani ~ Hand Made Wedges Sweetcorn ~ Chocolate & Strawberry Delight & Cinder Toffee	Fresh Kitchen Homemade Pie ~ Harry Ramsden Seaside Salmon, Lemon & Tartare SC ~ New Potatoes Fresh Seasonal Veg ~ Sticky Orange Pudding & Lemon Sauce	Fresh Kitchen Roast & Accompaniments ~ Smokey Mac & Mash Potato ~ Veg of Day ~ Roast & Mash Potato Veg of the Day ~ Jasmine Rice Pudding Fruit Puree	Sweet Potato & Chick pea Curry, Rice & Bread ~ Mozzarella & Tomato Pizza ~ Tomato & Parmesan Salad ~ Parmentiere Potatoes ~ Warm Chocolate Tart Crème Fraiche
Week 2	Roasted Vegetable Pasta Bake ~ Vegetable Mini Rolls & Sweet Chilli dip ~ Steamed rice Garlic Bread ~ Iced Strawberry Ripple Smashed Meringue	Freshly Baked Sausage Roll ~ Hand Made Fishcake ~ Sautéed Potatoes Garden Peas ~ Key Lime Pie	Classic Burger & Cheese ~ Vegetable Dippers & Ketchup ~ Crispy Fries Sweetcorn ~ Warm Cookies & Milkshake	Chicken Balti ~ Free Range Egg Quiche ~ Chopped Salad Basmati Wild Rice ~ Pineapple Sponge Pudding & Custard	Mixed Feast Pizza ~ Bubbly Crispy Fish ~ Potato Smiles Peas & Corn ~ Iced Cherry Bakewell
Week 3	Vegetable Chilli Loaded Skins ~ Vegetarian Panini ~ Herby cube Potato Sweetcorn ~ Chocolate & Banana Muffin, Candied Banana Frosting	Braised Beef & Baby Onions ~ Fish Fingers & Buttered Bread ~ Mash Potato Garden Peas ~ Leon Meringue Pie, Raspberry Puree	Fresh Kitchen Homemade Pie ~ Roasted Salmon Fillet ~ Boiled Potato Medley of Greens ~ Mixed Berry & Orange Russe	Toasted Brunch Bagel & Scrambled egg ~ Bang Bang Noodles ~ BBQ Beans Hash Browns ~ Fruit Topped Cheesecake	Tandoori Chicken Roasted pepper & Onion ~ Magherita Pizza ~ Skinny Fries Mexican Corn ~ Warm waffle, Frozen Strawberry Fool
Week 4	Lancashire Cheese & Onion Pie ~ Harry Ramsden Battered Pollack & Mushy Peas ~ Green Leaf Salad Sliced Potato ~ Homemade Carrot Cake	Cumberland Sausage & Proper Gravy ~ Cheese Ravioli & Fresh Tomato Bruschetta ~ Creamy Potato Peas & Carrots ~ Warm Citrus Pancake & Sorbet	Chicken Tikka Pitta, Mint Slaw ~ Vegetable & Bean Chimichanga ~ Corn on the Cob Onion & Black Pepper Potato ~ Fresh Fruit Meringue	Fresh Kitchen Roast & Accompaniments ~ Vegetarian Toad In the Hole ~ Roast & Mash Potato Veg of the Day ~ Warm Apple & Blueberry Pie ~ Vanilla Ice Cream	Nuggets and Sauce ~ Birds eye Salmon Fish Fingers & Buttered Bread ~ Potato Waffles Garden Peas ~ Trifle



**ATTENTION
All Parents!**



You can now pay for school items online

It's so easy and convenient:

- ✓ No more searching for cash or the cheque book
- ✓ Be confident payments have reached school
- ✓ Receive automatic payment reminders



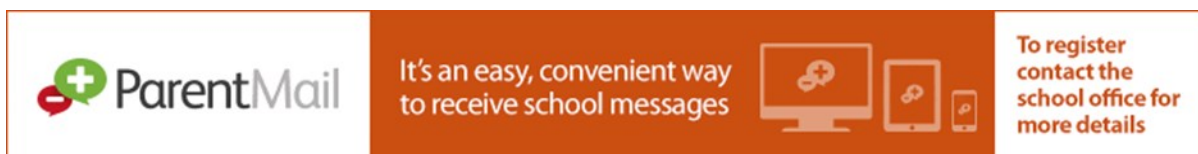
Make payments online via **ParentMail**



Simply log into your
ParentMail account to
pay online

Download
the **FREE**
ParentMail
App





Attention all Parents/Carers—Communicating with you is an important part of what we do, making sure you get the correct information about activities, events and school news that really matters is something we care about.

School Communications with ParentMail

Since September 2019 we have used ParentMail, a service used by over 6,000 schools, nurseries and children's clubs to communicate to parents. ParentMail will be beneficial to you because you can:

Use a free mobile app on Android and iOS to pick up school messages instantly.

Top up dinner money or pay for schools trips/items in just a few taps.

Complete forms, give consent/permissions and give feedback on surveys.

Keep on top of school meetings and events.

Book parents' evening appointments.

And much, much more!

By using ParentMail we hope to not only improve communication by making sure you get the information you need as quickly as possible but to also save the school money and help the environment by dramatically reducing the amount of paper we currently use.

Registering with ParentMail is very easy! In September you will be sent either an email and/or text message from ParentMail, when you receive this please just follow the instructions in the message.

Please be assured that ParentMail is registered with the Information Commissioner and guarantees that all information you provide will be kept private and will not be passed on to any other organisation.

Once registered, if you have an Android or Apple smartphone, we'd like to encourage all Parents/Carers to download the APP as there are a number of benefits both to you and the school:

You don't need to login to pick up messages or attachments when you use the App.

The App stores all the messages we send you in one place.

Every message sent arrives as an instant alert on your mobile.

You help save us money!

DATA PRIVACY NOTICE

1. Your personal data – what is it?

Personal data relates to a natural living individual who can be identified from that data.

Identification can be by the information alone or in conjunction with any other information in the data controller's possession or likely to come into such possession.

The processing of personal data is governed by the General Data Protection Regulation (the "GDPR") which came into force on May 25th 2018.

2. Who are we?

Norden Community Primary School is the data controller. This means the Data Controller decides how your personal data is processed and for what purposes.

3. How do we process your personal data?

Norden Community Primary School complies with its obligations under the "GDPR":

By keeping personal data up to date;

By storing and destroying it securely;

By not collecting or retaining excessive amounts of data;

By protecting personal data from loss, misuse, unauthorised access and disclosure;

By ensuring that appropriate technical measures are in place to protect personal data.

4: What we use your personal data for:

To enable us to provide a responsible and safe school for the benefit of our children in a particular geographical area ;

To administer pupil assessments, progress and records;

To manage our Staff, Pupils, Governors, employees and volunteers;

To maintain our own accounts and records;

To inform you of news, events, activities and services running at **Norden Community Primary School**;

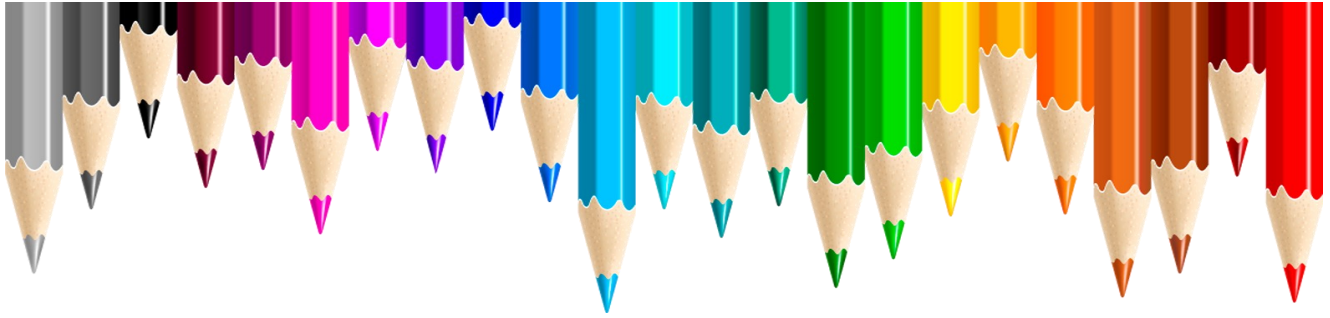
To share your contact details with the DFE and Local Authority so they can keep you informed, and for statistical research activities in which you may be interested.

5: What is the legal basis for processing your personal data?

Explicit consent of the data subject so that we can keep you informed about school news, events, activities process and keep you informed about school events.

Processing is necessary for carrying out obligations under employment, social security or social protection law or collective agreement.

Processing is carried out by a not-for-profit body with a political, philosophical, religious or trade union aim provided. The processing relates only to members or former members (or those who have regular contact with it in connection with those purposes); and there is no disclosure to a third party without consent.



NORDEN

Community Primary School



To a School Committed to Lifelong Learning in a Caring Environment

Shawfield Lane, Norden, Rochdale, OL12 7RQ

Headteacher: Mrs Rachael Bentham

Telephone: 01706 641013 **email:** office@norden.rochdale.sch.uk

Community Business Manager Mr Andrew Parker

Tel 01706 657485 / **email:** aparker@norden.rochdale.sch.uk

www.norden.rochdale.sch.uk

Facebook Page: Norden Community Activities



Norden Community Primary

Spring

MARCH

APRIL

Activity	AGE	TIME	NUMBER	COST	Class	Amount
	GROUP		OF WEEKS			
MONDAY						
Drama	All	3:00-4.15pm	5	£12.50		
Beginners & Intermediate Gymnastics	All	3:00-4.15pm	5	£12.50		
Trampoline Star Awards for all levels	All	3:00-4.15pm	5	£12.50		
Art Therapy and Zentangle	Y2-Y6	3:00-4.15pm	5	£12.50		
Twilight Trampoline NEW!	Y2 upwards	4:15-5:30pm	5	£12.50		
TUESDAY						
Multi Sport	Y3-Y6	3:00-4.15pm	5	£12.50		
Indoor Cricket	All	4.15-5.15pm	5	£12.50		
Wonky Weaving and Easter Crafts NEW!	N-Y2	3:00-4.15pm	5	£12.50		
Easter Crafty Crafts	Y3-Y6	3:00-4.15pm	5	£12.50		
WEDNESDAY						
Mini Multi Sport	N-Y2	3:00-4.15pm	5	£12.50		
Creative Clay	Y2-Y6	3:00-4.15pm	5	£12.50		
Easter Cookery (Please notify us of any allergies)	Y3-Y6	3:00-4.15pm	5	£17.50		
Homework Club	All	3:00-4.15pm	5	£12.50		
THURSDAY						
Lego and Beginners Art Therapy NEW!	Rec -Y2	3:00-4.15pm	5	£12.50		
Easter Tin Art & Art design	Y3-Y6	3:00-4.15pm	5	£12.50		
Trampoline Club	All	3:00-4.15pm	3	£7.50	*****	*
Fun Gymnastics Club	All	3:00-4.15pm	3	£7.50	*****	*
Advanced Gymnastics & Trampoline Club	All	4.15-5.30pm	3	£7.50	*****	*
FRIDAY						
Trampoline Club	All	3:00-4.15pm	5	£12.50		
iPads and Computers	Y1-Y6	3:00-4.15pm	5	£12.50		

Total Amount paid for Activities

£

Name of child:	
Class:	
Emergency Contact Number:	
Signed:	Parent/ Carer

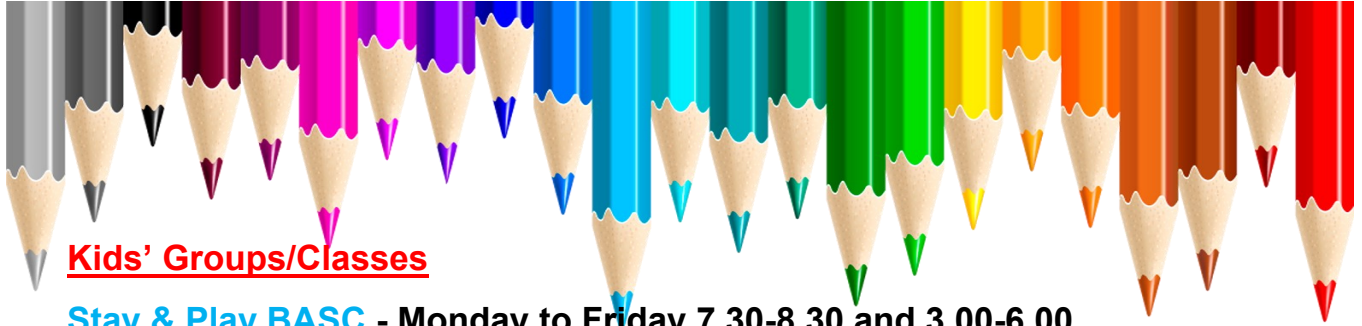
Please book early,
on our new Parent-
Mail booking system
to avoid

If your child attends an after school club he/she can only be collected at the relative time of the club closing unless otherwise arranged. As an integral part of school we work to the same late pick up policy of £5 will apply for children being

Children in Year 5 and 6 may be allowed to walk home after the activity has finished, providing we have a parents/carers consent.

I give permission for my son/daughter to walk home from school

Signed..... Print..... Date.....



Kids' Groups/Classes

Stay & Play BASC - Monday to Friday 7.30-8.30 and 3.00-6.00

Contact Dawn or Debbie on 07581116202 or email: sunrise57@hotmail.co.uk

Street Dance Presented by CH Dance

Wednesdays - Hiptots (3-6yrs) 4:45-5:30, Mini Movers (7-11Yrs) 5:35-6:20

Contact Carrie on 07710745702 or email: carrie@chdance.com

Norden Community Primary Schools After School Clubs

Drama - Monday 3:00-4:15

Gymnastics - Monday 3:00-4.15 & Thursday 4:15-5:15

Trampoline Club - Monday 3:00-4:15, Thursday 3:00-4:00 & Friday 3:00-4:15

Computer Class - Monday 3:00-4:15

Multi-Sport - Tuesday 3:00-4:15

Indoor Cricket - Tuesday 4:15pm-5:15pm

Creative Crafts - Tuesday 3pm-4.15pm.

One Stop Craft Club - Tuesday 3:00-4:15

Pottery - Wednesday 3:00-4:15

Homework Club - Wednesday 3:00-4:30

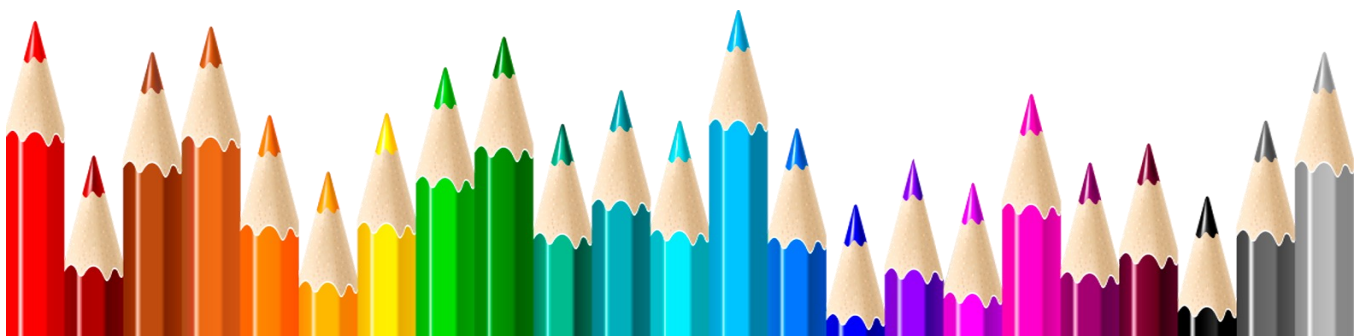
Fun and Creative Cookery - Wednesday 3:00-4:15

Lego and Board Games - Thursday 3:00-4:15

Art, Design & Tech - Thursday 3:00-4:15

Zentangle - Friday 3:00-4:15

For More information on After School Clubs Please contact the Community Office



Fitness & Relaxation Groups/Classes

Wellbank United (Adult Football) - Monday 8.15pm-9.15pm 5

-a-side football Call Jason 07970 196404 or email: jason@allinone.co.uk

Karate - Monday and Wednesday 7:00pm-8:00pm Con-

tact Adrian Coan on 07940285013 email: ady@shukokai.org.uk

Italian - Monday 10:00-12:00, Tuesday 10:00am-12:00pm,1:00pm-3:00pm & 7:00pm-9:00pm, Thursday 1:00pm-3:00pm & 7:00pm-9:00pm. Courses

start mid September. For more information please contact Paul on 07754991283, email: paoradaless@gmail.com or website: www.dimmelo-italianclass.co.uk

Low Impact Stretch, Trim & Tone - Monday 6:00pm-7:00pm Call

Julie on 07966521499 e-mail: sudlow.julie@yahoo.co.uk

Shawfield Indoor Bowling Club - Monday & Thursday 2:00pm-4:30pm, Tuesday 7:00pm - 9:30pm Bowls provided. Con-

tact Mrs B Starkey on 01706 342555

Pottery with Lissah - Tuesday 10:00am-12:00noon & 7:00pm-9:00pm, Thursday 7:00pm-9:00pm. Saturday 12:00-2pm by appointment for parties. Thurs- Pottery

classes groups and parties. Have fun, create and relax Call Lissah Hall on 07807644630 or email: Lissah.hall@outlook.com

Spanish - Monday, Tuesday, Wednesday , Thursday 7:00pm-9:00pm. Beginners to im-

provers. Contact Kim on 07879559581 or email
hughes@hopwood.ac.uk

Tae Kwon-Do - Tuesday & Thursday 6:00pm-7:00pm Com-

bined Martial Arts with fitness training for Adults & children. Call Shaun on 07753171707

Art Works - Monday 7:00pm-9:00pm For more infor-

mation and to book a place contact Helen Murphy on

07796761970 or 01616535592 or email murphys223@sky.com

Tuesday Afternoon Pottery - 1:00pm-3:00pm Contact

01706 657485 for more details

Woodwork Day Club - Tuesday & Wednesday 9.30am-11.30am & 1pm-2.30pm

in Woodwork Room. Adults £2.00, Senior Citizens £1.00 Call Neil on 01706 632040

Bamford & Norden Women's Club - Tuesday 7.30pm-9.30pm. A

friendly club enjoying speakers, demonstrations and outings. Contact Mrs Lattimer on 01706 631709 or email g.lattimer@sky.com.

Yoga - Wednesday 6.30pm-7.45pm in Small Hall.

Suitable for all abilities. (For adults although children over 8yrs are welcome with a parent if their parent feels the class is suitable for them.) Contact Louise on 07539260110 or e-mail louisecorlett@hotmail.com

Fat Burning Bums & Tums - Wednesday 6.45pm-7.45pm .

Contact Julie on 07966521499 or e-mail sudlow.julie@yahoo.co.uk

Mixed Keep Fit for Adults - Wednesday 8:00pm-9:00pm

Contact Mr W. Loynes on 01706 524850 email bernard-loynes@sky.com

Wednesday Morning Art Group - Wednesday 10.00am-12.00pm

No tuition available so unsuitable for beginners.

Contact Susan on 07753384450 or email joycej@email.com

Wednesday Night Art Group - Wednesday 7:00pm-9:00pm

£5.00 per session. We are a very friendly group who meet to paint and chat. Call Frank on 01253702969 or email:dorrylester@aol.com

Shawfield Table Tennis - Thursday 7.00pm-10.00pm.

Social and competitive table tennis. The club plays competitively in the Bury & District League from March to September. We have one table available each week for social table tennis. New members of any standard are welcome at any time of the year. Contact Andrew on 01706 356593 email: andrewwebster631@btinternet.com

Slimming World - Friday 10.00am in Small Hall .

Mainly adults but 11-15yrs welcome. All welcome just turn up on the day. Call Kate White on 07921658870



HOLIDAY ACTIVITIES

For ages 4-11yr Olds

All the Tutors & Coaches are highly qualified and DBS checked staff from Norden Community Primary School working under the leadership of Mr A Parker, Community Business Manager

Monday, Tuesday & Wednesday
21st, 22nd & 23rd October 9am - 4pm

TRAMPOLINING & MULTI SPORTS

Full or half days packed with fun filled sporting activities including Trampoline, Archery, Multi-Sports, Athletics, Uni-Hoc, New Age Curling, Dodgeball and Indoor cricket.



CRAFTY CRAFTS

Full or half days with various crafts including Junk Modelling, Tin Art, Art Design Technology, Lego building, craft creation, Computers, pottery and Zentangle.



(Not all activities will be available for each session)

Cost: 3 days £55.00
Single day £20.00
Half Day £11.00 (9.00am-12.00pm) or (1.00pm-4.00pm)

Norden Community Primary School, Shawfield Lane,
Norden Rochdale OL12 7RQ
E-mail: aparker@norden.rochdale.sch.uk
Telephone: 01706 657485
Facebook: Norden Multi-Activity



R
E
B
O
T
C
O

Norden Community Primary School



Even if you're late

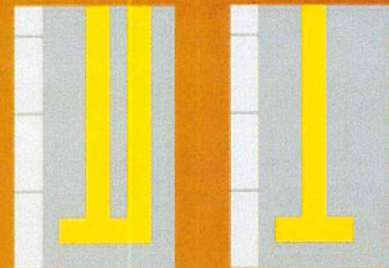


Be careful where you park!

DON'T PUT OUR CHILDREN'S LIVES AT RISK

SAFER PARKING

- Do not park on double yellow lines or on a single yellow line during restricted times.
- Do not park on footpaths or within 10 metres of a junction as this restricts visibility. The Police may issue a Fixed Penalty Notice.
- Do not block driveways or dropped kerbs.



Why not try one of the alternatives:

- Park & Stride – park away from the school and walk the last 5-15 minutes of the journey



Safety Starts With YOU!

Stay
Safe



Show
RESPECT





Contact Details

Norden Community Primary School

Shawfield Lane, Norden, Rochdale. OL12 7RQ

Telephone: **01706 641013**

E-Mail: **office@norden.rochdale.sch.uk**

